

A black and white photograph of two women in an office environment. They are both smiling and looking at a computer monitor. The woman in the foreground is wearing a sleeveless top, and the woman behind her is wearing a blazer and a tie. The background shows office shelves with various items.

# Digital collaboration: Updates from MissouriHub and DDPLA

Emily Jaycox

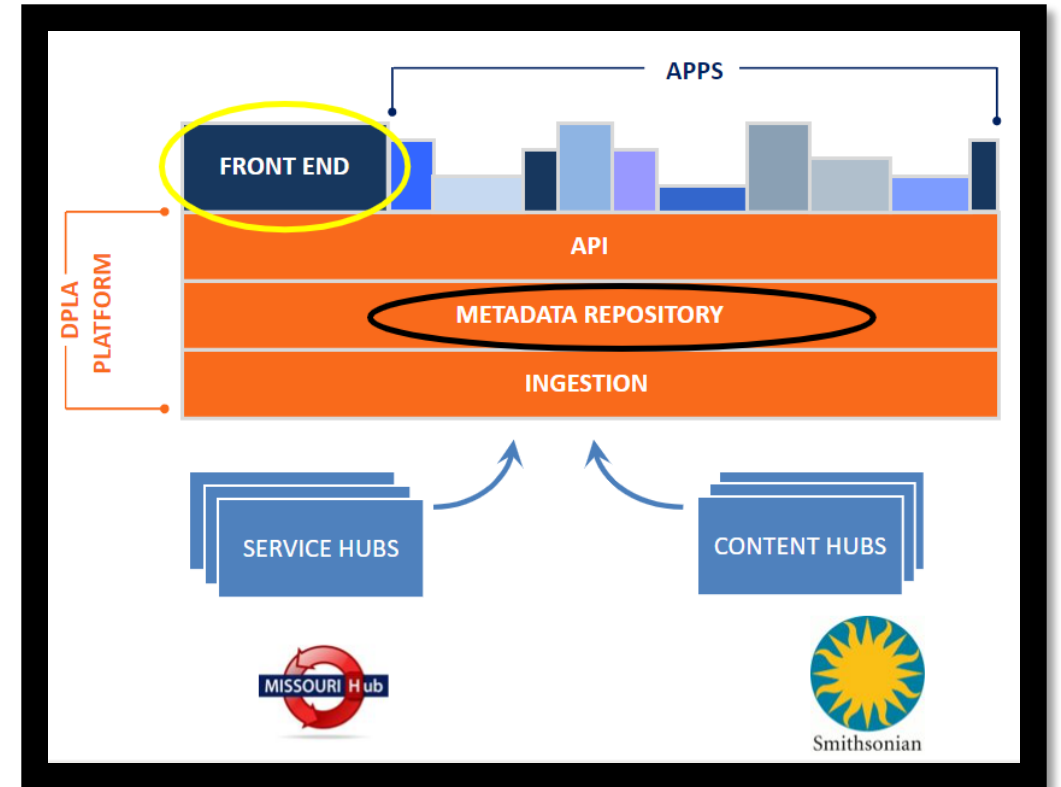
SLRLN Tech Expo 2022

# What I'll cover today

- A tale of two startups: DPLA and MissouriHub
- Recent DPLA initiatives:
  - Wikimedia Commons
  - Searching for Black Women in the Archives
  - Harmful Language Statement



Bringing together the riches of America's libraries, archives, and museums to make them freely available to the world





# A tale of two startups

DPLA

and

MissouriHub

# Beginnings – DPLA and MoHub



## DPLA

- 2010 – Planning begins
- 2013 – DPLA launches
  - Daniel Cohen, first executive director
  - First DPLAfest

## MissouriHub

- 2012 – TECHO: Informal meetings of StL-area digitization / linked data folks
- 2013 – Chris Freeland asks: Could Missouri join DPLA?
  - Mo State Lib can't lead at this time
  - Reach out to multi-type libraries statewide
  - David Henry of Mo Historical Society offered to be metadata wrangler; Emily Jaycox provides admin support
- 2014: MoHub launches with content from 11 partners

# Next steps: How do we operate?

- 2016-17: DPLA announces new ingest model, but has repeated setbacks
- 2016: DPLA develops paid membership model for Hubs
- 2017: Director change at DPLA
- 2015: MoHub writes bylaws, holds its first annual members meeting, elects Steering Committee
- 169,360 online records from 11 partners
- Mo State Library joins, adding hosted collections to MoHub

# 2018-19: Stormy waters

- Aggregation is difficult; ingests are intermittent
- Traffic from DPLA seems low

December 2018:

- 40% of DPLA staff is laid off... including most staff who worked in cultural heritage aggregation

- MoHub Steering Committee chair launches conversations about a community of practice
- Mo State Library funds a MoHub planning retreat in Columbia MO
- MoHub Technical Lead David Henry announces relocation to WI
- No new ingest for more than 2 years

*J. Refs.*

*The James Watt Steam Packet, propelling against  
A STORM,*

# Realignment

- DPLA strategic plan has 3 focus areas:
  - Cultural heritage aggregation
  - EBooks
  - Tech convener
- Funding secured
- Governance structure for cultural heritage aggregation used as a model
- IDEAS task force convened

- MOBIUS offers to act as MoHub's sponsor (pays the \$10,000 annual DPLA membership fee)
- 2019 ingest (using 2017 data): 227,799 online records from 14 partners
- MOBIUS hosts [missourihub.org](http://missourihub.org) website
- MoHub past chair Drew Kupsky serves on DPLA IDEAS task force
- Matt Krc of StL Fed Library begins conversations with DPLA tech staff





# 2020-2021

## DPLA

- 2.3 million media from DPLA are now in Wikimedia Commons
- <https://dp.la/about/harmful-language-statement>
- <https://blackwomenssuffrage.dp.la>

## MissouriHub

- Matt Krc of StL Fed Library now serving as MoHub technical lead. Multiple ingests!
- GitHub site
- 9 MoHub staff served as mentors to 11 MOBIUS libraries adopting a new DPLA-compatible digitization platform



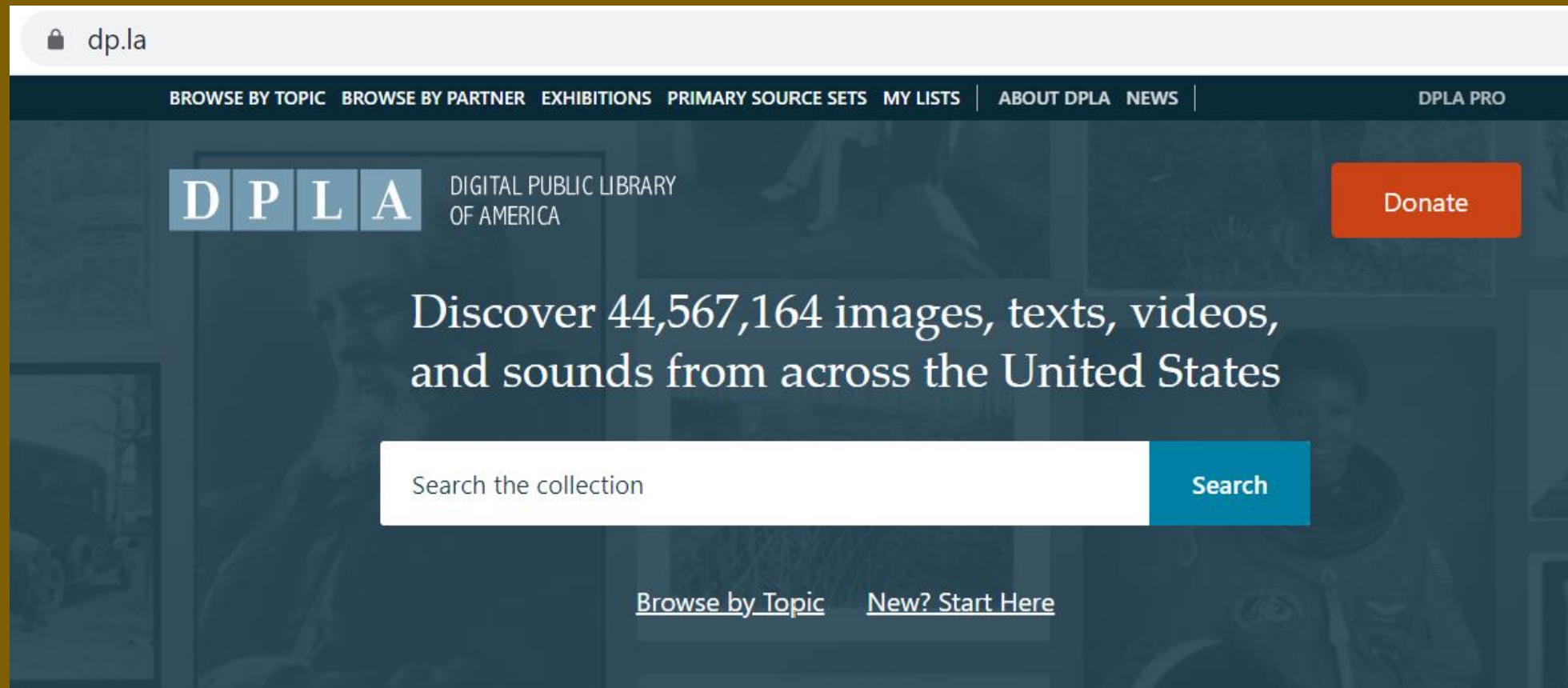
# MissouriHub 2022

- 573,500 records on DPLA
- Getting structure in place for onboarding new partners
  - Tech
    - OAI feed testing
  - Admin
    - Updated Bylaws October 2021
    - Working on Path to Membership
    - Conversations with Iowa



# Recent DPLA initiatives

- Wikimedia Commons
- Black Womens Suffrage project
- Harmful Language Statement



The screenshot shows the homepage of the Digital Public Library of America (DPLA). The browser address bar displays "dp.la". The navigation menu includes "BROWSE BY TOPIC", "BROWSE BY PARTNER", "EXHIBITIONS", "PRIMARY SOURCE SETS", "MY LISTS", "ABOUT DPLA", "NEWS", and "DPLA PRO". The main header features the DPLA logo (the letters D, P, L, A in blue boxes) and the text "DIGITAL PUBLIC LIBRARY OF AMERICA". A red "Donate" button is positioned in the top right. The central message reads "Discover 44,567,164 images, texts, videos, and sounds from across the United States". Below this is a search bar with the placeholder text "Search the collection" and a blue "Search" button. At the bottom, there are links for "Browse by Topic" and "New? Start Here".

dp.la

BROWSE BY TOPIC | BROWSE BY PARTNER | EXHIBITIONS | PRIMARY SOURCE SETS | MY LISTS | ABOUT DPLA | NEWS | DPLA PRO

**D P L A** DIGITAL PUBLIC LIBRARY OF AMERICA

Donate

Discover 44,567,164 images, texts, videos, and sounds from across the United States

Search the collection Search

[Browse by Topic](#) [New? Start Here](#)



Category Discussion

View Edit History

Search Wikimedia Commons

# Category:Media contributed by Boston Public Library

Good pictures Help

From Wikimedia Commons, the free media repository

# DPLA and Wikimedia Commons

## Media in category "Media contributed by Boston Public Library"

The following 200 files are in this category, out of 11,775 total.

(previous page) (next page)

"Anvil Rock," on Western Slope of Aztec Range, Arizona, 1,350 miles west of Missouri River. - DPLA - 75cd26c6b6d2a11e98cc7ad52880b0c9.jpg 1,194 × 800; 146 KB	"Appeal to the Great Spirit" statue, Museum of Fine Arts, Boston, Mass. - DPLA - 125223da21e42bc6b1aa7dedf7bbcc90.jpg 619 × 800; 130 KB	"Appeal to the Great Spirit" statue, Museum of Fine Arts, Boston, Mass. - DPLA - 6a69f1427dcdeba16cab8fde340a728e.jpg 615 × 800; 156 KB	"Aztec Pass," Western Arizona, 1,330 miles from Missouri River. - DPLA - a4e1cc7a1f70d72f033e5ee31361693b.jpg 1,197 × 800; 145 KB	"Dorothy Q" House, old Quincy Mansion, Quincy, Mass. - DPLA - 1d748970cf39d3f0cfc9b4fa1efbd917.jpg 1,043 × 800; 466 KB

## Category:Media contributed by Boston Public Library [Hide]

Wikimedia category

[Upload media](#)

Instance of [Wikimedia category](#)

Category combines topics [Wikimedia content partnership](#), [Boston Public Library](#)

### Boston Public Library

library in Boston, Massachusetts, U.S.



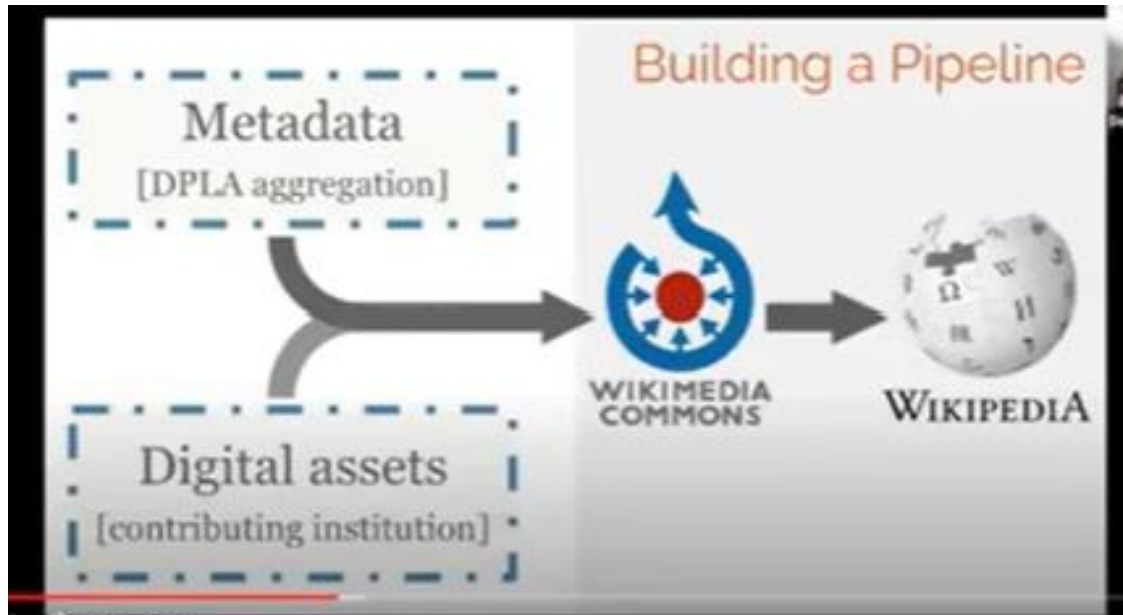
image  nighttime view  Show all



- Main page
- Welcome
- Community portal
- Village pump
- Help center
- Language select
- English
- Participate
- Upload file
- Recent changes
- Latest files
- Random file
- Contact us
- Tools
- What links here
- Related changes
- Special pages
- Permanent link
- Page information
- Wikidata item
- RSS feed
- Nominate category for discussion

# 2020: What the Wikimedia collaboration started out to do

Developmental Partners: National Archives, Smithsonian, Colorado



- Prerequisites:
  - Opt-in at collection level
  - Rights statement must permit re-use
- Populating Commons would be automatic
- Linkage to Wikipedia articles still a manual process
  - Training on how to edit Wikipedia and add images

# DPLA is the largest contributor to Wikimedia Commons

---

## DPLA's pipeline to Wikimedia Dominic



- 2+ million uploads
  - 650,000 items
  - 200 contributing institutions
  - 1000 Wikipedia articles
-



WIKIMEDIA  
COMMONS

Main page  
Welcome  
Community portal  
Village pump  
Help center

Language select  
English

Participate  
Upload file  
Recent changes  
Latest files  
Random file  
Contact us

Tools  
What links here  
Recent changes  
Special pages  
Permanent link  
Page information  
Wikidata item  
RSS feed  
Nominate category for discussion

Print/export  
Create a book  
Download as PDF  
Printable version

Category Discussion

View Edit History Search Wikimedia Com

## Category:Media contributed by Boston Public Library



From Wikimedia Commons, the free media repository

Contents: Top · 0-9 · ABCDEFGHIJKLMNOPQRSTUVWXYZ · --

### Media in category "Media contributed by Boston Public Library"

The following 200 files are in this category, out of 11,765 total.

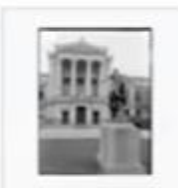
(previous page) (next page)



"Anvil Rock," on Western Slope of Aztec Range, Arizona, 1,350 miles west of Missouri River. - DPLA - 75cd26c6b6d2a11e98cc7ad5288b0c9.jpg 1,194 × 800; 146 KB



"Appeal to the Great Spirit" statue, Museum of Fine Arts, Boston, Mass. - DPLA - 125223da21e42bc6b1aa7ded77bccc90.jpg 619 × 800; 130 KB



"Appeal to the Great Spirit" statue, Museum of Fine Arts, Boston, Mass. - DPLA - 6af9f14270cdeba16cab8fde340a728e.jpg 615 × 800; 156 KB



"Aztec Pass," Western Arizona, 1,330 miles from Missouri River. - DPLA - a4e1cc7a1f70d72f033e5ee31361693b.jpg 1,197 × 800; 145 KB



"Dorothy Q" House, old Quincy Mansion, Quincy, Mass. - DPLA - 1c748970cf9d38d0c0e4a1efbd917.jpg 1,043 × 800; 466 KB



### Category:Media contributed by Boston Public Library

Upload media  
Instance of Wikimedia Commons  
Category combines Boston Public Library topics

### Boston Public Library in Boston, Massachusetts



Image:nighttime Boston Public Library.jpg



- 16,000,000 views from just 1000 Wikipedia articles
- One hub had 40,000 views from 12 articles

# How it's evolving

- Sync updates to metadata records in the Commons
  - Continued reharvesting will reflect richer descriptions
- Migrating as much metadata as possible to Structured Data Statements
  - New way of describing files on Wikimedia Commons
  - Field types and values can be represented by Wikidata URIs
  - More controlled, queryable, and visible to automated processes
  - Improved findability and reuse.







About

Timeline

Key

Collections

Partners

Visit

DPLA



Figures

**Black women's suffrage.  
Thousands of artifacts.  
Thousands of stories.**

**LEARN MORE →**

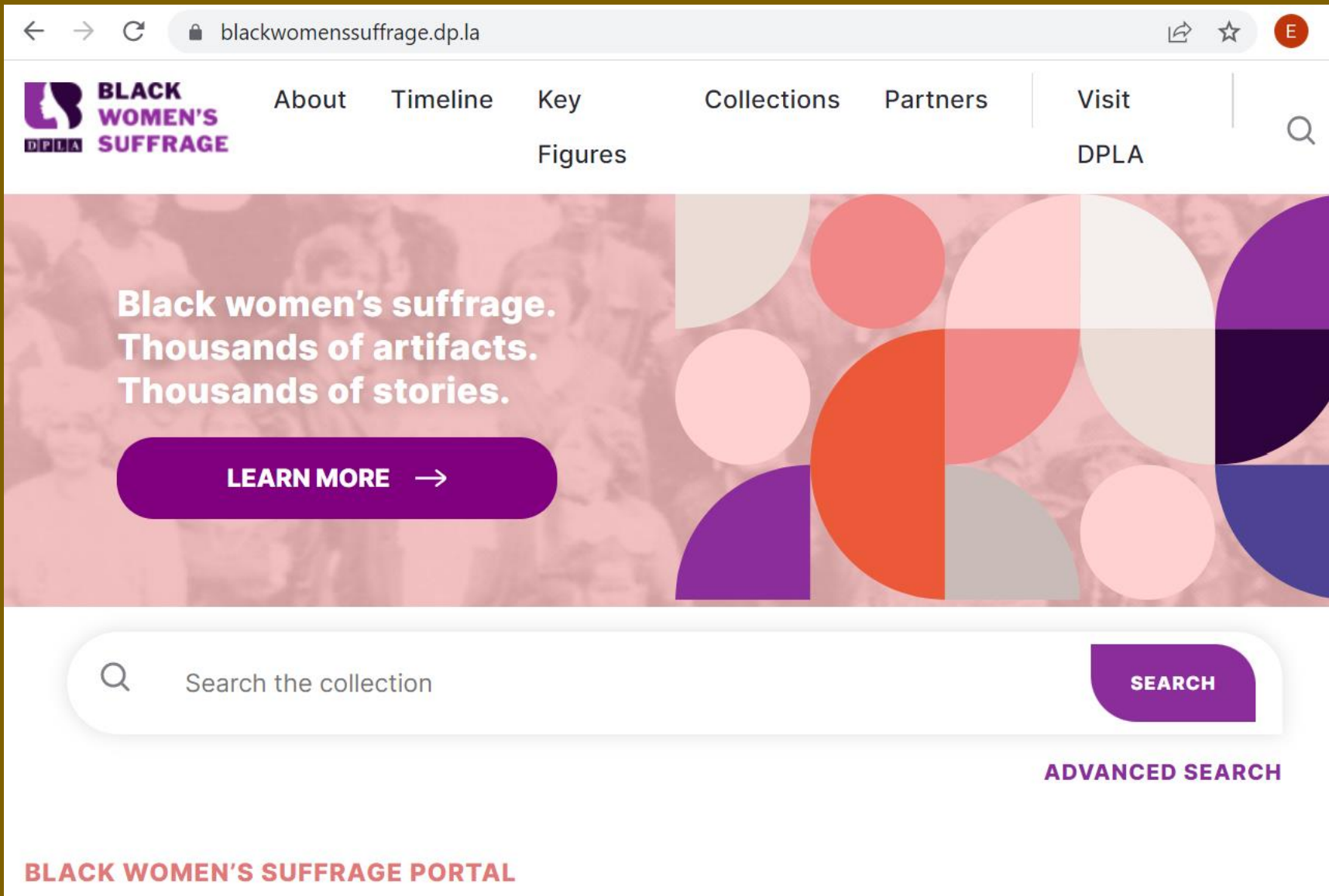
# Black Womens Suffrage project



Search the collection

**SEARCH**

**ADVANCED SEARCH**



- Portal development and launch

- Metadata: Searching for Black Women in the Archives

Goal: Identify as much relevant material as possible while effectively filtering out irrelevant material.

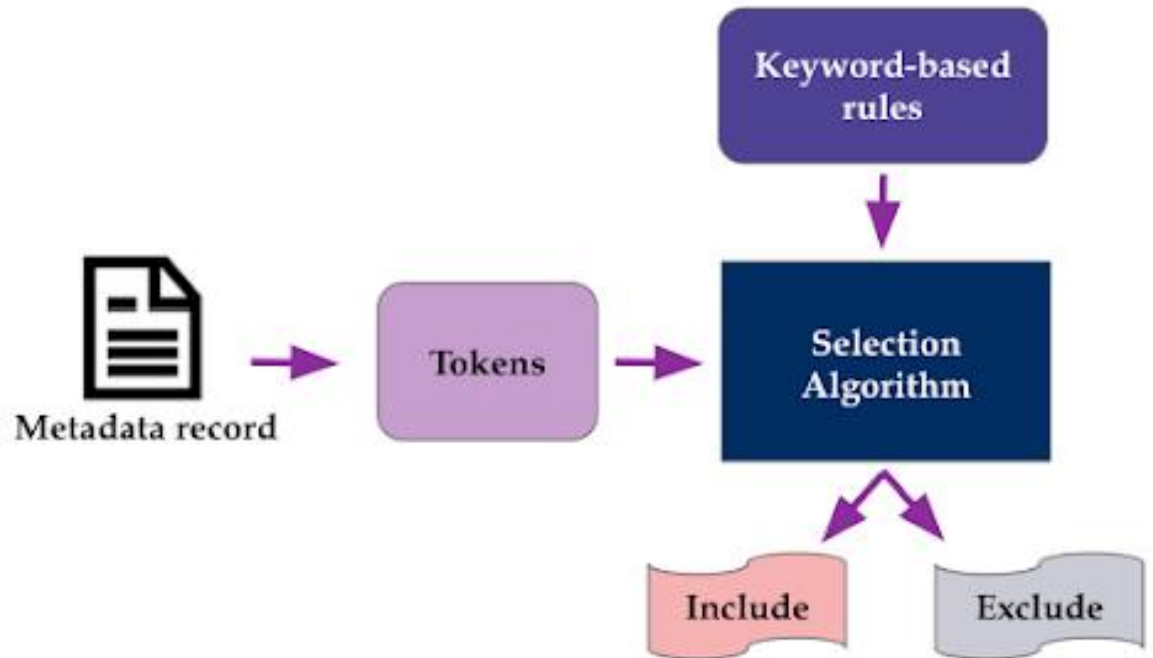
- Challenges:
- Under-representation of materials about Black women
- Over-representation of materials that reflect a White worldview
- Significant variety in labeling and description of relevant materials



*On the left, a photograph of Black activist Mary McLeod Bethune [\[link\]](#). Its metadata record has the subject term "African American women civil rights workers," which contains both a racial and gender signifier. On the right, a photograph of White activist Juliette Hampton Morgan [\[link\]](#). Its metadata record has the subject term "Women civil right workers," which has a gender signifier but no racial signifier. Courtesy of California Digital Library and Los Angeles Public Library; and Digital Library of Georgia and Encyclopedia of Alabama.*

- Each DPLA item is reduced to a set of keyword *tokens*
- Example: *Scenes from the Life of Harriet Tubman* -->  
**scene, life, harriet, tubman**

- Each week, the algorithm is run against DPLA, adding new materials, and applying any new keyword-based rules the curators have submitted.



## Harmful language statement

# DPLA's Statement on Potentially Harmful Content

The Digital Public Library of America (DPLA) is a portal to millions of freely available items from thousands of libraries, archives, museums, and other cultural heritage organizations across the United States.

DPLA contains some content that may be harmful or difficult to view. Our cultural heritage partners collect materials from history, as well as artifacts from many cultures and time periods, to preserve and make available the historical record. As a result, some of the materials presented here may reflect outdated, biased, offensive, and possibly violent views and opinions due to pervasive systemic intolerance. In addition, some cultural heritage institutions collect and preserve materials relating to violent or graphic events which are preserved for their historical significance.

# DPLA Resources

View DPLA webinars and get on mailing list to receive invitations:

<https://pro.dp.la/events/workshops>

- DPLA + Wikimedia: One year and 10,000,000 views:
  - <https://www.youtube.com/watch?v=jLoJ0gvvSNU>
- Black Women's Suffrage portal: <https://blackwomenssuffrage.dp.la/>
- Race, Power and Curation: Launching the Black Women's Suffrage Digital Collection:
  - <https://www.youtube.com/watch?v=kIKZ7ghx0To>
- Searching for Black women in the Archives: 4-part blog series
  - <https://dp.la/news/searching-for-black-women-in-the-archives>
- DPLA's Harmful Language Statement
  - <https://dp.la/about/harmful-language-statement>



Questions?  
Get in touch!

[emily@mohistory.org](mailto:emily@mohistory.org)