

USING GOOGLE FORMS TO FIND ETHNOGRAPHIC TRENDS IN THE LIBRARY

CHRIS VAUGHN
WILLIAM JEWELL COLLEGE

@JEWELLPLC  

BACKGROUND

- Opened in 2013
- \$15 Million
- 7 Collaboration Studios and 5 Creativity Studios
- Home to 4 Academic Services Departments
- Building Accessible to Students 24/7



COUNTING

- Gate Counts
- Reference Statistics
- Instruction Sessions









ETHNOGRAPHY

- A form of participant observation most commonly utilized by anthropologists.
- A FIRST-HAND, descriptive written account of a particular culture or group , focusing on a particular population, place and time, and all with the goal of accurately describing that culture.
- Empirical Evidence – Justify a belief or falsify a claim.
- Physical Spaces Only Considered: How and What are being used?


Sallee Center for Engaged Learning

How many people are in the room?

Equipment in Use

Check Any that Apply

- Collaboration with AirMedia
- Television Tuner (Cable TV)
- Room Reservation (Room is Reserved)

Add Item 

Shumaker Center for Justice and Sustainability

How many people are in the room?

Equipment in Use

Check Any that Apply

- Collaboration with AirMedia
- Television Tuner (Cable TV)
- Room Reservation (Room is Reserved)



Add Item 



Please Asses the Entire Area

How active is the area?

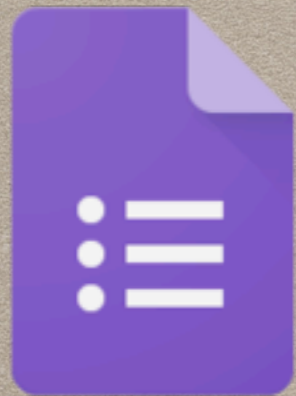
1 2 3 4 5 6 7 8 9 10

Empty Busy

How many computers are in use?



Add item -



Google Forms

<https://docs.google.com/forms/d/e/1FAIpQLSemkmgI7IUPSRf0B33a9vgLMXpUND9pNhpdEGtzYqLAkkLn2A/viewform>

	A	B	C	D	E	F	G	H	I	J	K	L	M	N	O
1	Timestamp	How many people are in the area?	How active is the area?	Check all furniture that is in use	Check all furniture that is in use	Check all furniture that is in use	Check all furniture that is in use	How active is the area?	How many people are in the area?	Furniture in Use	How active is the area?	How many people are in the area?	Furniture in Use	How active is the area?	How many people are in the area?
1586	2/7/2017 13:07:21	2	2	That couch	Grey window benches	Sidetable	Skinny Grey Couch, Red mushrooms	2	1	Side Tables, Mushrooms	2	1	Privacy Partitions, Side Tables, Mushrooms	1	1
1587	2/8/2017 13:06:41	0	1					4	3		2	1	Side Tables, Mushrooms	2	1
1588	2/8/2017 18:10:03	0	1					2	1	Side Tables, Mushrooms	2	1	Privacy Partitions, Side Tables, Mushrooms	1	0
1589	2/10/2017 13:09:19	2	2		Grey window benches		Skinny Grey Couch, Red mushrooms	2	2	Side Tables, Mushrooms	2	2	Side Tables, Mushrooms	2	1
1590	2/10/2017 13:09:35	2	2		Grey window benches		Skinny Grey Couch, Red mushrooms	2	2	Side Tables, Mushrooms	2	2	Side Tables, Mushrooms	2	1
1591	2/10/2017 18:03:55	0	1					1	0		1	0		1	0
1592	2/13/2017 13:04:41	7	3	Black-white, striped chairs, Red mushrooms, That couch	Grey window benches	Skinny Grey Chairs	Skinny Grey Couch, Red mushrooms	3	3	Side Tables, Mushrooms	2	2	Privacy Partitions, Side Tables, Mushrooms	2	1
1593	2/14/2017 13:49:09	1	1				Skinny Grey Couch, Red mushrooms	1			1			1	1
1594	2/14/2017 18:10:53	2	3			Skinny Grey Chairs, Red mushrooms, Sidetable		4	3	Side Tables, Mushrooms	2	1	Privacy Partitions, Side Tables	2	
1595	2/15/2017 13:05:10	4	3	Black-white, striped chairs, That couch		Skinny Grey Chairs	Skinny Grey Couch	2	2	Side Tables, Mushrooms	2	1	Privacy Partitions, Side Tables	2	1
1596	2/15/2017 18:13:30						Skinny Grey Couch, Whiteboard Table	2	2	Side Tables, Whiteboard Tables	1	1	Side Tables		
1597	2/16/2017 13:13:18	3	3	Black-white, striped chairs, Red mushrooms				2	1	Side Tables, Mushrooms	1			2	1
1598	2/17/2017 13:03:50	0	1					2	2	Side Tables, Mushrooms	2	2	Privacy Partitions, Side Tables, Mushrooms	2	1
1599	2/20/2017 13:07:21	4	3	That couch	Grey window benches		Skinny Grey Couch	2	2	Side Tables, Mushrooms	2	2	Privacy Partitions, Side Tables, Mushrooms	2	1
1600	2/21/2017 13:18:30			Black-white, striped chairs			Skinny Grey Couch	2	1	Mushrooms	1			2	1
1601	2/21/2017 18:00:05	0	2	Red mushrooms			Skinny Grey Couch, Red mushrooms	1	0		1	0	Privacy Partitions, Side Tables	2	2
1602	2/22/2017 13:09:29	5	4		Grey window benches	Skinny Grey Chairs	Skinny Grey Couch	3	3	Side Tables, Mushrooms	2	1	Privacy Partitions, Side Tables	2	1

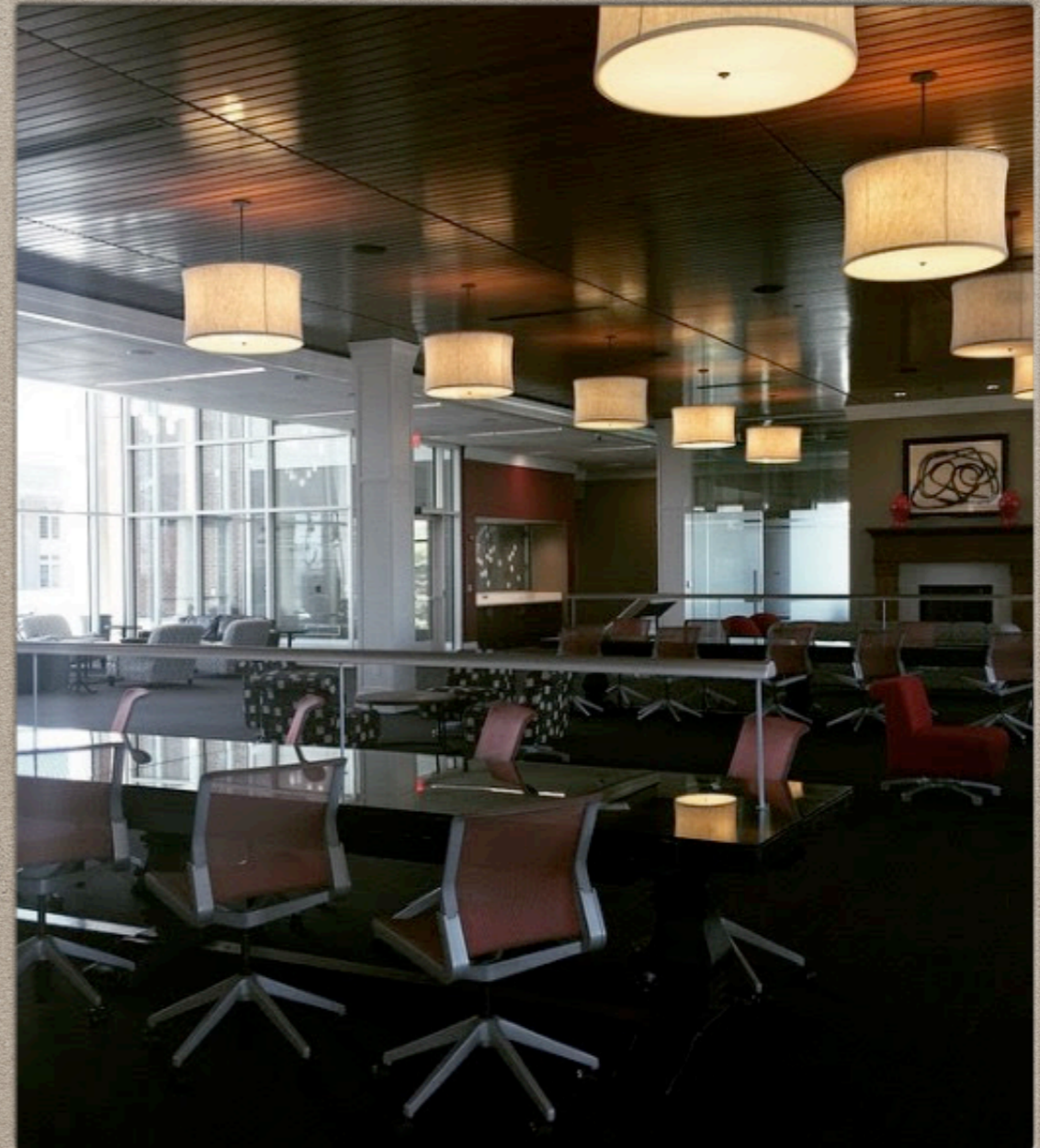
2nd Level Data						
File Edit View Insert Format Data Tools Form Add-ons Help SearchAndReplaceFormulas						
fx =SUMIF('Form Responses'!AF:AF, ">0")/COUNTIF('Form Responses'!AF:AF, ">0")						
	A	B	C	D	E	
1	Total Number of Surveys Completed					
2	1602					
3						
4		Collaboration Studios				
5		Sallee Center for Engaged Learning	Shumaker Center for Justice and Sustainability	Shouse Tower Room	Window Area 1	Window
6	Average Number of People when Occupied	2	2	4	2	
7	Estimated Percentage Occupied	58.74%	57.99%	75.97%	72.10%	
8	Average Activity Level When Occupied			2.07	1.75	
9						
10						

fx =COUNTIF('Form Responses'!AH:AH, ">0")/A2

	A	B	C	D	E
1	Total Number of Surveys Completed				
2	1602				
3					
4		Collaboration Studios			
5		Sallee Center for Engaged Learning	Shumaker Center for Justice and Sustainability	Shouse Tower Room	Window Area 1
6	Average Number of People when Occupied	2	2	4	2
7	Estimated Percentage Occupied	58.74%	57.99%	75.97%	72.10%
8	Average Activity Level When Occupied			2.07	1.75
9					

FINDINGS

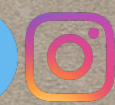
- Computer Areas were Important to Students: around 62% usage
- 2nd Floor: Smallest gate count, largest survey count
- Low Activity Levels on Quiet Floor
- Meetings/Group study: 60% Use
- 3rd floor tables: Highest Use Area 89%
- Low AirMedia use: 18% Highest (112) all others around 4-6%





QUESTIONS

CHRIS VAUGHN
WILLIAM JEWELL COLLEGE
VAUGHNC@WILLIAM.JEWELL.EDU



@JEWELLPLC