

# NETnews

St. Louis Regional Library Network  
Spring 2000 Vol. 12 No.7

## President

Mary Zettwoch  
(Member-at-Large)  
U of Missouri-St. Louis  
Thomas Jefferson Library  
8001 Natural Bridge Rd.  
St. Louis, MO 63121  
516-5066 **FAX 516-5853**  
zettwoch@umsl.edu

## Treasurer

Ellen Eliceiri  
(Small Academic)  
Eden-Webster Libraries  
475 E. Lockwood Ave.  
St. Louis, MO 63119  
968-6951 **FAX 968-7113**  
email:eliceiri@library2.websteruniv.edu

## Secretary

Carol Winkler  
(Private School)  
Nerinx High Library  
530 E. Lockwood  
St. Louis, MO 63119  
968-1505 **FAX 968-7297**  
email cwinkler@nerinx.org

## Vice President

Georgia Baugh  
(Large Academic)  
St. Louis U-Pius Library  
3650 Lindell Blvd.  
St. Louis, MO 63108-3302  
977-3580 **FAX 977-3108**  
email baughga@slu.edu

## Network Contact:

Bernyce Christiansen  
SLRLN  
9425 Big Bend Blvd.  
St. Louis, MO 63119  
314-965-1305 **FAX 314-965-4443**  
bchristiansen@ursulinstl.org

## ANNUAL DINNER

**When: Thursday April 27, 2000**

5:30 – 6:30 p.m. Loretto Hilton tour and mini-talk.  
6:30 – 7 p.m. Business meeting  
7 p.m. Dinner Buffet – Sunnen Lounge

### Menu:

Grilled chicken breast Italian  
Fettucine alfredo  
Garlic-Rosemary Roasted Potatoes  
Tossed garden salad  
Fruit salad  
Glazed carrots  
Key lime pie  
Carrot Cake  
New York Cheese cake

**Where: Webster University**

475 E. Lockwood, Webster Groves

**Speaker: Byron Grant**, Associate professor,  
Chairperson of Webster University Theatre Department.

### “BACKSTAGE AT THE THEATRE”

Byron will give us a tour of backstage at the Loretto Hilton before dinner. After dinner he will share with us some of the tricks of the trade that make for an enjoyable evening at the Loretto Hilton.

**COST: \$14.00 member/ \$20 non-member**

**...to register see back inside page...**

**COUNCIL**

**REPRESENTATIVES**

Betty Murr  
(Large Public)  
St. Charles City County Public Library  
425a Spencer Rd. P.O. Box 529  
St. Peters, MO 63376  
441-2300 FAX 441-3132  
email bmurr01@mail.win.org

Ann Russell  
(Public School)  
Lindbergh High Library  
4900 S. Lindbergh  
St. Louis, MO 63126  
729-2410 FAX 729-2405  
e-mail russella@mail.lindbergh.k12.mo.us

Ann Compton Riley  
(Member-at-Large)  
St. Louis Community College Library-Meramec  
11333 Big Bend Blvd.  
St. Louis, MO 63122  
984-7624 FAX 984-7225  
email ariley@stlcc.cc.mo.us

John Furlong  
(Small Public)  
Brentwood Public Library  
8765 Eulalie Ave.  
St. Louis, MO 63144  
963-8630, ext. 8633 FAX 962-8675  
email hrb000@mail.connect.more.net

Mary Ann McFarland  
(Health)  
St. Louis University-Health Sciences Library  
1402 S. Grand Blvd.  
St. Louis, MO 63104  
577-8605 FAX 772-1307  
email mcfarlma@slu.edu

Lynnette Fields  
(Lewis & Clark Library System)  
425 Goshen Rd.  
(618) 656-3216, ext 107 FAX (618) 656-9401  
email lynnf@LCLS.LIB.IL.US

Jill Gordon  
(Special)  
St. Louis Zoo Library  
Forest Park  
St. Louis, MO 63110  
781-0900 ext 319 FAX 647-7969  
email GORDON@STLZOO.ORG

**COUNCIL NOMINATIONS**

The Network Council needs nominations for one member-at-large, one special library, one private school library, one medical library, and one small academic library for the Network Council term of three years starting in May 2000. We are asking for nominations now. The nominees will be introduced and the vote will take place during the business meeting at the annual dinner on April 27th at about 6:30 p.m. If you would like to nominate yourself or someone else (please check to be sure that the individual is able to accept the nomination), fill out the nomination form below and mail it to the network office by April 24th. Ballots will distributed at the meeting and a vote taken.

A network council member has about six network meetings plus an annual dinner to attend per year.

---

**NOMINATIONS**

I nominate \_\_\_\_\_ from the \_\_\_\_\_

\_\_\_\_\_ Library to be a representative to the St. Louis

Regional Library Network for a three year term starting May 2000.

Another nomination: \_\_\_\_\_ from the

\_\_\_\_\_ Library

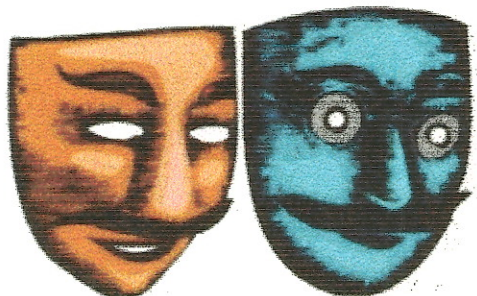
\_\_\_\_\_  
Librarian

\_\_\_\_\_  
Library

**Return by April 24, 2000**



# Annual Dinner



Byron Grant, associate professor, Chairperson of Webster University Theatre Department, will treat us to a tour of the Loretto Hilton and then after dinner he will present "Backstage at the Theatre".

---

**REGISTRATION DEADLINE: APRIL 19, 2000**

Parking directions and a map will be faxed as a confirmation of registration.

**FAX #:** \_\_\_\_\_

Send registration form and fee (check payable to SLRLN) to Bernyce Christiansen, SLRLN, 9425 Big Bend Blvd., St. Louis, MO 63119.

Libraries who must wait for checks to be processed mail your registration with a note check is to follow.

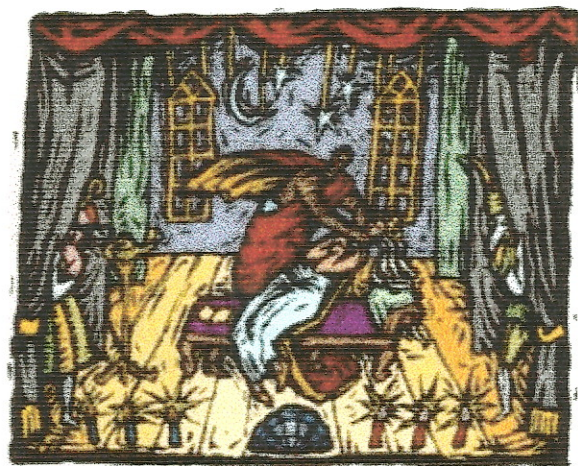
## Registration

**Name:** \_\_\_\_\_

**Library:** \_\_\_\_\_

\_\_\_\_ Theater tour

\_\_\_\_ Dinner (\$14 mem/  
\$20 non-mem)



**St. Louis Regional Library Network**

c/o Ursuline Academy Library

341 S. Sappington

St. Louis, MO 63122

---

Non-Profit Org.

U.S. Postage

**PAID**

St. Louis, MO

Permit No. 4361

**DATED MATERIAL**

Bernyce Christiansen

SLRLN

9425 Big Bend

St. Louis, MO 63119

63119-3924 B2



NETnews is published eight times a year by the St. Louis Regional Library Network to report on Network activities, meetings, and items of interest to the membership and the wider library community.

News, reviews and comments are welcome. Send information to B. Christiansen, 9425 Big Bend, St. Louis, Mo 63119.

A copy of Netnews is sent to each member. Nonmember subscriptions are \$30/year.