

NETnews

St. Louis Regional Library Network

September 1993

Vol. 5 No. 8

NETWORK COUNCIL

President:
Vicky Witte
(Member-at-Large)
Washington University
Olin Library
6600 Millbrook Blvd. Box 1061
St. Louis, MO 63130
935-5466

Vice-President:
Libby Moore
(Private School)
St. Louis U High Library
4970 Oakland Ave.
St. Louis, MO 63110
531-0330, ext. 39

Treasurer:
Marylou Pierce Fox
(Member-at-Large)
Webster Groves Public Library
301 E. Lockwood
Webster Groves, MO 63119
961-3784

Secretary:
Linda Bigelow
(Small Academic)
Jefferson College Library
Hillsboro, MO 63050
942-3000, ext. 166

NETWORK CONTACT

Bernyce Christiansen
SLRLN
9425 Big Bend
St. Louis, MO 63119
314-965-1305
FAX 314-965-4443

LIBRARY AFTER HOURS

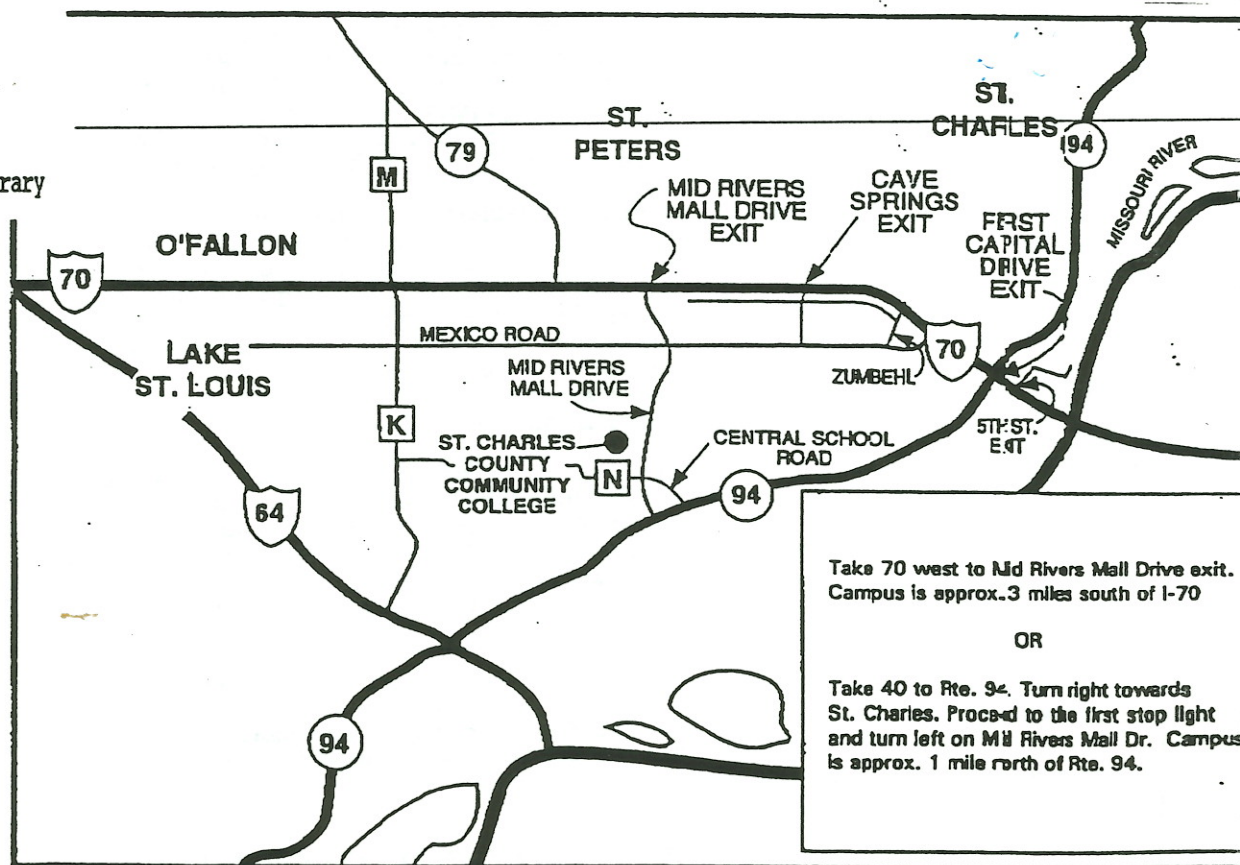
THURSDAY, OCTOBER 21, 1993

4:30 P.M. - 6:30 P.M.

St. Charles Community College Library

LIBRARY TOURS - REFRESHMENTS

St. Charles County Community College moved to its new campus in 1992. The Instructional Resources Center takes advantage of campus-wide ethernet wiring to provide an integrated library automation and CD-ROM network. Call by noon Thursday October 21st, 922-8470 if you are coming.



ST. CHARLES COUNTY COMMUNITY COLLEGE
LOCATION MAP

**COUNCIL
REPRESENTATIVES:**

JOBLINE

Mary E. Johnson
(Health)
Missouri Institute of Mental Health
5400 Arsenal St.
St. Louis, MO 63139-1494
314-644-8860

Norma Williams
(Public School)
Cleveland Naval Academy
4352 Louisiana
St. Louis, MO 63111
314-832-0933

Gary Denué
(Large Academic)
Southern Illinois University
Edwardsville-Lovejoy Library
Box 1063, SIUE
Edwardsville, IL 62026-1001
618-692-2711

Pamela Pirio
(Special)
Stupp Teacher Resource Center
4344 Shaw Blvd. P.O. Box 299
St. Louis, MO 63166-0299
314-577-9501

Terrence Donnelly
(Small Public)
Maplewood Public Library
7601 Manchester
Maplewood, MO 63143
314-781-2174

Martha Maxwell
(Large Public)
Jefferson County Public
3021 High Ridge
High Ridge, MO 63049
314-677-8689

Missouri Baptist College, an evangelical Christian Institution, is seeking applicants for acquisition/reference librarian. Reference work is 3 times a week (evenings). Saturday & Sunday off.

Qualifications: MLS from an accredited ALA Institution, and one or two years experience.

Salary: Negotiable.

Effective Date: Immediately.

Send resume to: Nitsa Hindeleh, Jung-Kellogg Library, Missouri Baptist College, 12542 Conway Road, St. Louis, Mo. 63141.

Washington University in St. Louis
Olin Library System
Staff Development Officer

The Olin Library System of Washington University in St. Louis is seeking a talented and creative individual to serve as Staff Development Officer. The Olin Library System is engaged in the process of establishing a comprehensive, multi-year staff development program for the system which consists of a large central library and eight satellite subject libraries.

The STAFF DEVELOPMENT OFFICER is responsible for developing and coordinating the Library's staff development program, assessing needs and implementing library-wide activities to address these needs; planning, designing and conducting in-house training programs; conducting job analyses; and evaluating program effectiveness on an ongoing basis.

QUALIFICATIONS: Masters degree in Library Science or related field preferred. Academic background in personnel administration, adult education, psychology or counseling preferred. Demonstrated skill in training adults to acquire new skills, use prior knowledge of training and maximize transfer. Understanding of the role of the research library in higher education. Expertise in library operations preferred. Strong interpersonal skills. Sensitivity and responsiveness to staff needs. Excellent oral and written communication skills.

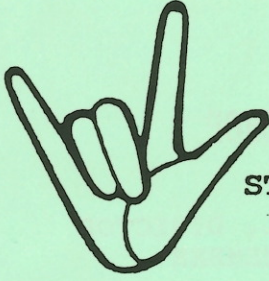
Applicants should send résumé and names of three references/statement of professional qualifications, interests, to Human Resources Office, Campus Box 1184, One Brookings Drive, St. Louis, MO 63130-4899 by November 1, 1993. Employment eligibility verification required upon hire. Washington University is an equal opportunity, affirmative action employer.

WANTED

12- 15 drawer catalog for small religious library.
Please contact, Julianne Good, 832-2319.

FREE

St. Louis University High School Library is offering a complete set of "American Heritage" magazines from 1954 to present in pristine condition. If interested please call Libby Moore, 531-0330.



ST. LOUIS REGIONAL LIBRARY NETWORK

presents

ADA WORKSHOP

Solutions: ADA and your LIBRARY

St. Louis County Main Library Meeting Room
1640 South Lindbergh Boulevard

November 22, 1993, 10 a.m. - 3 p.m.

SHARE IDEAS AND CONCERNS

- * Send sample copies of applicable policies, ADA compliance plans, job descriptions, etc. to SLRLN, 9425 Big Bend, St. Louis, MO 63119 or FAX to (314) 965-4443 by Nov. 1, 1993 for duplication and distribution at the workshop.
- * Bring special appliances/devices to assist the disabled and that you would recommend for demonstration, plus order information
- * See ADA video available from the Missouri State Library
- * Look over ADA Kit created by MO. State Library and task force and available for loan from the State Library
- * Discuss "REASONABLE ACCOMMODATION", ADA and programming, inexpensive problem-solving, successful inhouse training programs that you have used, involving the disabled in planning and other unique topics.

If a signer or any other assistance is required, please notify George Durnell, St. Louis County Library (994-3400) at least one week prior to workshop.



SOLUTIONS: ADA AND MY LIBRARY

ST. LOUIS REGIONAL LIBRARY NETWORK WORKSHOP

- 10:00 WELCOME AND INTRODUCTIONS: MARTHA MAXWELL, DIRECTOR
JEFFERSON COUNTY LIBRARY, NETWORK BOARD MEMBER
- 10:10 A LIBRARY USER'S PERSPECTIVE
SPEAKER: TO BE NAMED
- 10:40 ADA: EMPLOYMENT PRACTICES AND REASONABLE ACCOMMODATION
SPEAKER: TO BE NAMED
- 11:10 ADA: PROGRAM ACCOMMODATION
SPEAKERS: PANEL TO BE NAMED
- 11:35 ADA: PHYSICAL ACCOMMODATIONS
SPEAKERS: BETTY MURR, DEPUTY DIRECTOR;
BILL STRECKER, CORPORATE PARKWAY BRANCH MANAGER,
ST. CHARLES CITY/COUNTY LIBRARY
- 12:00 LUNCH (TO BE PROVIDED BY NETWORK: \$5.00)
- 12:45 VIDEO: PEOPLE FIRST: SERVING AND EMPLOYING PEOPLE WITH
DISABILITIES (AVAILABLE IN MO. STATE LIBRARY ADA KIT)
- 1:45 IDEA SHARING
DISCUSSION LEADER: TERRY DONNELLEY, DIRECTOR,
MAPLEWOOD PUBLIC LIBRARY, NETWORK BOARD MEMBER
- TOPICS: INEXPENSIVE IDEAS THAT WORKED
INHOUSE TRAINING PROGRAMS
RESOURCE SHARING: BOOKS, MATERIALS, AND
EQUIPMENT
SOURCES FOR SIGNERS
- 2:45 WRAP-UP AND EVALUATION

REGISTRATION: SOLUTIONS: ADA AND MY LIBRARY (NOV. 22, 1993)
ST. LOUIS REGIONAL LIBRARY NETWORK WORKSHOP
ST. LOUIS CO. LIBRARY MEETING ROOM
1640 S. LINDBERGH, LADUE, MO.

By November 5, 1993, mail this reegistration form with \$5.00
(payable to St. Louis Regional Library Network) for lunch to:
SLRLN; %Bernyce Christiansen; 9425 Big Bend; St. Louis, MO 63119.

NAME: _____

LIBRARY: _____

WORK PHONE: _____

Baker/Jackson White Paper to help update Interlibrary Loan

A revolution is underway, thanks in part to the work of Shirley Baker and Mary Jackson, who have co-authored an important document outlining problems with and solutions for making interlibrary loan -- a key success factor for libraries -- able to carry the growing load.

Libraries have always worked together in a variety of arrangements to borrow and lend books and journal articles. And the system has worked well, for the most part, until recently. Explains Mary Jackson in an April 1993 *Wilson Library Bulletin* article on the subject: "The current interlibrary loan system — which is really a collection of networks, consortia, systems, and even friendships — has many strengths. The interlibrary loan environment however, is strained by its success."

The white paper, entitled "Maximizing Access, Minimizing Cost: A First Step toward the Information Access Future", describes the current state of interlibrary loan, and was written for presentation to the Association of Research Libraries' Access Committee. In the document, the authors set forth what's wrong with the system — exploding volume, inefficient and complex charging and billing procedures, slow delivery systems and lack of comprehensive management and statistical information — then shared their ideas for improving the process. "The paper describes an ideal interlibrary loan environment — a vision arrived at by combining educated guesses with a rubbing of the interlibrary loan crystal ball,"

High School Teachers Receive Information And Support From The Libraries

Washington University contributes to the health and vitality of the St. Louis educational community in several ways. The Libraries do their part by hosting orientation sessions and giving courtesy borrowing privileges to area educators who demonstrate a need or have a special interest. On July 8th, the Libraries were called upon to participate in a summer learning program for new high school teachers. Carol Antoniewicz, Rudolph Clay, Dency Kahn, Bill Olbrich and Vicky Witte responded to the call and volunteered to conduct a library session.

The International High School is the new magnet school in the St. Louis public school system specializing in international studies. To prepare for the opening this fall, about 70 teachers spent the day in a "Summer Inservice Program" at Washington

University. As part of this program, two sessions were offered, each lasting about one and one-half hours. Vicky Witte introduced the session, then handed the program over to Rudolph to introduce the group to our online resources. Carol, Bill and Dency described the role subject specialists can play in research.

The goal of the program, according to James McLeod, Dean of Arts & Sciences, was for the group of teachers to "look on Washington University as a valuable and accessible partner in education." The librarians who participated in the orientations helped the University meet that goal, providing the teachers with useful information to assist them in their new endeavors. No doubt many will become regular patrons.

Jackson writes. "Our ideal scenario imagines a patron-initiated interlibrary loan supported by automated financial accounting and management systems. The purpose of describing this ideal world is to merge near-term improvements with long-term desirable changes."

The Jackson-Baker white paper is receiving positive attention at national conferences and from library system vendors. Co-author Mary Jackson is currently working full-time as a Visiting Program Officer at the Association of Research Libraries to make the

"The current interlibrary loan system — which is really a collection of networks, consortia, systems, and even friendships — has many strengths. The interlibrary loan environment however, is strained by its success."

— Mary Jackson

The implementation of a new system of patron-initiated requesting and a new system for handling the financial end of the transaction would impact significantly on the current system that is estimated to cost U.S. libraries \$71.1 million annually to support.

recommendations in the paper a reality. Dean Baker says the job at hand is to bring together libraries and system designers to make positive changes. Dean Baker will report to the Library staff on the latest developments in this fast-moving process in the third week in August.

INFO-PASS UPDATE

Add:

Lael College and Graduate School

CP: Cathy Jackson, 426-7000
OA: Harry Richardson
S: 12 - 4 p.m., M-F
AA: yes
R: 18 yrs or older, 2 books, 2 wk
no AV or periodicals

FREE COPIES

Add:

Lael College & Graduate School

UPDATE:

Greenville College new FAX
(618) 644-1373.

NETnews is published nine times a year by the St. Louis Regional Library Network to report on Network activities, meetings, and items of interest to the membership and wider library community.

News, reviews and comments are welcome. Send information to Bernyce Christiansen, 9425 Big Bend Blvd., St. Louis, MO 63119. You may call Bernyce at the SLRLN office, (314) 965-1305.

A copy of NETnews is sent to each member. Nonmember subscriptions are \$30/year.

Acceptance of an advertisement does not imply endorsement of the product or service by the St. Louis Regional Library Network.

St. Louis Regional Library Network
c/o Ursuline Academy Library
341 S. Sappington Road
St. Louis, MO 63122

Non-Profit Org.
U.S. Postage
PAID
St. Louis, MO
Permit No. 4361