

NETnews

St. Louis Regional Library Network

FALL 1993

Vol. 5 No. 9

NETWORK COUNCIL

President:
Vicky Witte
(Member-at-Large)
Washington University
Olin Library
6600 Millbrook Blvd. Box 1061
St. Louis, MO 63130
935-5466

Vice-President:
Libby Moore
(Private School)
St. Louis U High Library
4970 Oakland Ave.
St. Louis, MO 63110
531-0330, ext. 39

Treasurer:
Marylou Pierce Fox
(Member-at-Large)
Webster Groves Public Library
301 E. Lockwood
Webster Groves, MO 63119
961-3784

Secretary:
Linda Bigelow
(Small Academic)
Jefferson College Library
Hillsboro, MO 63050
942-3000, ext. 166

NETWORK CONTACT

Bernyce Christiansen
SLRLN
9425 Big Bend
St. Louis, MO 63119
314-965-1305
FAX 314-965-4443

YOUR CHANCE TO BE FEATURED

Has your library done something new and different? Have you tried a new programming idea that was successful? Maybe you are working on automation and have some tips for others.

Some months I have more than enough material to finish the NETnews, but other months I need some additional material. I would like to feature some of our member libraries and their programs, their projects, their ideas or their staff. If you would like to share your ideas please send materials to: St. Louis Regional Library Network, %Bernyce Christiansen, 9425 Big Bend Blvd., St. Louis, MO 63119 or FAX to (314) 965-4443.

If you have nothing to share now, please keep this feature in mind and send information later. This publication can only be interesting and helpful if people send me information and ideas. In my small school library I do not hear of many of the interesting innovative programs and projects that are available for the area librarians. **PLEASE SHARE YOUR NEWS ITEMS WITH ALL.**

Thanks...Merry Christmas.

**COUNCIL
REPRESENTATIVES:**

Mary E. Johnson
(Health)
Missouri Institute of Mental Health
5400 Arsenal St.
St. Louis, MO 63139-1494
314-644-8860

Norma Williams
(Public School)
Cleveland Naval Academy
4352 Louisiana
St. Louis, MO 63111
314-832-0933

Gary Denué
(Large Academic)
Southern Illinois University
Edwardsville-Lovejoy Library
Box 1063, SIUE
Edwardsville, IL 62026-1001
618-692-2711

Pamela Pirio
(Special)
Stupp Teacher Resource Center
4344 Shaw Blvd. P.O. Box 299
St. Louis, MO 63166-0299
314-577-9501

Terrence Donnelly
(Small Public)
Maplewood Public Library
7601 Manchester
Maplewood, MO 63143
314-781-2174

Martha Maxwell
(Large Public)
Jefferson County Public
3021 High Ridge
High Ridge, MO 63049
314-677-8689



**Need answers
to reference questions?**

To expand reference services throughout the state, the Missouri State Library has established the Statewide Reference Center.

The center's professional librarians answer questions on a wide variety of subjects, including business, history, sports and cookery. Just call (800) 633-0603.

**Smithsonian publishes
resource guide**

The new edition of the free *Smithsonian Resource Guide for Teachers* lists more than 400 educational items from more than 40 museums and organizations.

For more information, or to order copies, write the Office of Elementary and Secondary Education, Arts and Industries Building, Room 1163, MRC 402, Smithsonian Institution, Washington, D.C. 20560, or phone (202) 357-2425.

COSTS OF SUPPLIES:

ALA interlibrary loan forms:

.15 each - \$15.00 Pkg of 100
or
25 forms for \$4.00

INFO-PASS forms:

.25 each - \$25.00 Pkg of 100
or
18 forms for \$5.00

Network DELIVERY forms:

.25 each - \$25.00 Pkg of 100
or
18 forms for \$5.00

Contact:

**ST. LOUIS REGIONAL
LIBRARY NETWORK**
% Bernyce Christiansen
9425 Big Bend Blvd.
St. Louis, MO 63119
(314) 965-1305

Modern Literature Collection Participates In New Database Project

Washington University is among 25 institutions in the country participating in the creation of a database on primary materials in American literature. The Research Libraries Group is developing this one-year pilot project, dubbed the Research Resources in American Literature project, with funds from the National Endowment for the Humanities.

Our Modern Literature Collection was hand-picked by the four RLG library leaders in the project after being identified as having important collections related to American literature. "We have very strong manuscript holdings in American literature," explained Kevin Ray, Curator of Manuscripts. "And being chosen to participate in this project says quite a bit about the international reputation of the Modern Literature Collection; we're in very good company." Among those: Boston Public, Duke University, the Huntington Library, the Lilly Library (Indiana University, Bloomington), the Newberry Library (Chicago), New York Public, UCLA, University of Delaware (where Kevin's predecessor,

Tim Murray, now heads the Special Collections department), University of Chicago and University of Virginia. The four RLG libraries leading the way are the Beinecke at Yale, Dartmouth College Library, Harry Ransom Humanities Research Center at the University of Texas at Austin, and the Houghton Library at Harvard College, the latter serving as editorial headquarters for the project.

While this means considerably more work for Kevin, he is delighted to be part of this distinguished endeavor. The Libraries' Modern Literature Collection includes the correspondence, manuscripts, typescripts and ephemera of many remarkable 20th century writers, among them, Samuel Beckett, Elizabeth Bishop, Ford Madox Ford, A.E. Hotchner, Howard Nemerov, May Swenson and Mona Van Duyn.

WEST-CAMPUS LIBRARY

As the exhibit in the vestibule of Olin Library demonstrates, construction is underway in the former Famous-Barr building, which in September will officially open as the new West Campus Library. David Straight, Supervisor, reports that shelving installation began the week of July 19th. It took five semi-trailers of steel shelving to haul over five miles of stacks! The first Library materials will begin arriving on August 16th from the departmental libraries which are experiencing the most critical space problems: Earth & Planetary Sciences, Art & Architecture, Music, Chemistry and Biology.

The Libraries will finally get a much-needed conference area at this facility (see article, page 4).



New Meeting Rooms To Open At West Campus

The Washington University Libraries will soon experience a dream come true: we will have our own meeting room/conference area. The facilities will be located at the new West Campus, and will be designed to serve a variety of meeting needs.

"We are able to complete this meeting area because of the generosity of a friend of the University and the Libraries who has given to the University in the past," Dean Baker said.

"These meeting facilities will be ideal for people on and off campus," reported David Stone, Facilities Coordinator. "The space is versatile, functional, and close to a parking lot that offers plenty of free parking."

The facility includes a lounge designed to hold 12 - 15 people in a relaxed, living room-like setting, resembling a scaled-down version of the Women's Building Lounge. This room will be used by the Libraries' Bookmark Society book discussion groups and for other small gatherings. The meeting room will hold seating for 200, but can also be partitioned into two smaller areas. The room will be used for a variety of Library staff functions, as well as public events.

A dedication ceremony for the West Campus facility and new meeting area is being planned for the fall.

OLIN LIBRARY BARCODING

The barcoding project began on June 8th with approximately 32 students. On July 6th, the first wave of staff volunteers began their work. As of July 28th, approximately 450,576 barcodes were applied, out of a total of about 467,000. A first cut at problem resolution is underway by Circulation and Cataloging staff.

AUTOMATED CIRCULATION

Nine of 11 libraries on the Hilltop campus are now operating with automated circulation systems (all but Law and East Asian libraries). Automated circulation systems offer many technical and procedural benefits, but the most visible one for patrons is the ability to show the circulation status of an item in its record. The record states the item's location and whether it is checked out, and if so, when it is due back.

Libraries Sponsor Flood Relief Effort

To help our flood-ravaged community, the Libraries' staff association sponsored a flood relief effort, asking library staff to bring in needed items and make donations to benefit the Salvation Army and the Red Cross, respectively. On August 3rd, Alice Sinak, Library Business Officer, and Saadiq Ziyad, Supervisor of Support Services, delivered nearly a full van of goods to the Salvation Army drop-off point in South St. Louis. A week later, several checks were forwarded to the Red Cross.

Alice was assisted by Dency Kahn, Science/Engineering Librarian, and Carole Prietto, University Archivist, in coordinating the effort on behalf of the Libraries' staff association.

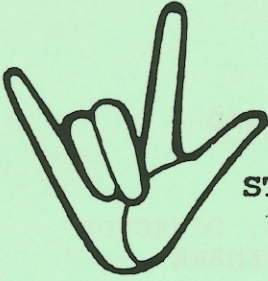
INFO-PASS UPDATE

Revision:

**St. Louis U-
Medical Library**
CP: Christopher White
OA: Allen Grimm, Thomas Hardy, Clint Potts, Jerri Nwachukwu, M.E. Konen
Tefamariam, Lula Eneguse

U. of MO-St. Louis
OA: Amy Arnott, Melissa Silvestre

St. Charles Community College
OA: Kathy Bouman



ST. LOUIS REGIONAL LIBRARY NETWORK

presents

ADA WORKSHOP

Solutions: ADA and your LIBRARY

St. Louis County Main Library Meeting Room
1640 South Lindbergh Boulevard

November 22, 1993, 10 a.m. - 3 p.m.

SHARE IDEAS AND CONCERNS

- * Send sample copies of applicable policies, ADA compliance plans, job descriptions, etc. to SLRLN, 9425 Big Bend, St. Louis, MO 63119 or FAX to (314) 965-4443 by Nov. 1, 1993 for duplication and distribution at the workshop.
- * Bring special appliances/devices to assist the disabled and that you would recommend for demonstration, plus order information
- * See ADA video available from the Missouri State Library
- * Look over ADA Kit created by MO. State Library and task force and available for loan from the State Library
- * Discuss "REASONABLE ACCOMMODATION", ADA and programming, inexpensive problem-solving, successful inhouse training programs that you have used, involving the disabled in planning and other unique topics.

If a signer or any other assistance is required, please notify George Durnell, St. Louis County Library (994-3400) at least one week prior to workshop.



SOLUTIONS: ADA AND MY LIBRARY

ST. LOUIS REGIONAL LIBRARY NETWORK WORKSHOP

- 10:00 WELCOME AND INTRODUCTIONS: MARTHA MAXWELL, DIRECTOR
JEFFERSON COUNTY LIBRARY, NETWORK BOARD MEMBER
- 10:10 A LIBRARY USER'S PERSPECTIVE
SPEAKER: TO BE NAMED
- 10:40 ADA: EMPLOYMENT PRACTICES AND REASONABLE ACCOMMODATION
SPEAKER: TO BE NAMED
- 11:10 ADA: PROGRAM ACCOMMODATION
SPEAKERS: PANEL TO BE NAMED
- 11:35 ADA: PHYSICAL ACCOMMODATIONS
SPEAKERS: BETTY MURR, DEPUTY DIRECTOR;
BILL STRECKER, CORPORATE PARKWAY BRANCH MANAGER,
ST. CHARLES CITY/COUNTY LIBRARY
- 12:00 LUNCH (TO BE PROVIDED BY NETWORK: \$5.00)
- 12:45 VIDEO: PEOPLE FIRST: SERVING AND EMPLOYING PEOPLE WITH
DISABILITIES (AVAILABLE IN MO. STATE LIBRARY ADA KIT)
- 1:45 IDEA SHARING
DISCUSSION LEADER: TERRY DONNELLEY, DIRECTOR,
MAPLEWOOD PUBLIC LIBRARY, NETWORK BOARD MEMBER
- TOPICS: INEXPENSIVE IDEAS THAT WORKED
INHOUSE TRAINING PROGRAMS
RESOURCE SHARING: BOOKS, MATERIALS, AND
EQUIPMENT
SOURCES FOR SIGNERS
- 2:45 WRAP-UP AND EVALUATION

REGISTRATION: SOLUTIONS: ADA AND MY LIBRARY (NOV. 22, 1993)
ST. LOUIS REGIONAL LIBRARY NETWORK WORKSHOP
ST. LOUIS CO. LIBRARY MEETING ROOM
1640 S. LINDBERGH, LADUE, MO.

By November 5, 1993, mail this reegistration form with \$5.00
(payable to St. Louis Regional Library Network) for lunch to:
SLRLN; %Bernyce Christiansen; 9425 Big Bend; St. Louis, MO 63119.

NAME: _____

LIBRARY: _____

WORK PHONE: _____

JOBLINE

Brentwood Public Library is seeking a part-time Children's Librarian. Qualifications: MLS from an ALA accredited Library School preferred. Send resume to Mary Lee Frisbie, Brentwood Public Library, 8765 Eulalie Ave. Brentwood, MO 63144.



FREE

Microfilm available from Berkley High School. If interested call Rina Krasney, (314) 521-4897.

Atlantic Monthly 1966, 1967, 1968, 1969, 1970, 1971, 1972

Senior Scholastic 1965, 1966, 1967, 1968, 1969, 1970, 1971

Today's Health 1964, 1965, 1966, 1967, 1968, 1969, 1970, 1971

Science Digest 1960, 1961, 1962, 1963, 1964, 1965, 1966, 1967, 1968, 1969, 1970, 1971

LOOK 1960, 1961, 1962, 1963, 1964, 1965, 1966, 1967, 1968, 1969, 1970

Saturday Review 1960, 1961, 1962, 1963, 1964, 1965, 1966, 1967, 1968, 1969, 1970, 1971, 1972

**NETWORK OFFICE WILL
BE CLOSED FROM NOON
DEC. 22 TO JAN. 3.**



MERRY CHRISTMAS

NETnews is published nine times a year by the St. Louis Regional Library Network to report on Network activities, meetings, and items of interest to the membership and wider library community.

News, reviews and comments are welcome. Send information to Bernyce Christiansen, 9425 Big Bend Blvd., St. Louis, MO 63119. You may call Bernyce at the SLRLN office, (314) 965-1305.

A copy of NETnews is sent to each member. Nonmember subscriptions are \$30/year.

Acceptance of an advertisement does not imply endorsement of the product or service by the St. Louis Regional Library Network.

St. Louis Regional Library Network
c/o Ursuline Academy Library
341 S. Sappington Road
St. Louis, MO 63122

Non-Profit Org.
U.S. Postage
PAID
St. Louis, MO
Permit No. 4361

**DATED
MATERIAL**